

# *S&A Reagents Lab Ltd.,Part.*

---

*Since  
1989*



## *S&A Product Catalogue 2026*



S&A Reagents Lab Ltd.,Part.

4 Soi Latphrao-wanghing 28 , Lat Phrao, Bangkok 10230, Thailand.

Phone : +662-5388622 Fax : +662-9316098 e-mail: saplab1990@gmail.com

In Partnership with Alaska International Importation and Consultation as International Distributor

Phone: +1-424-888-0219 E-mail: info@serotest-thailand.com Website: www.serotest-thailand.com

*Beyond to the ideal quality of Serological Diagnosis*

# ***S&A Product Catalogue***

---

## **Thailand orders**

Marketing Department  
S&A Reagents Lab Ltd., Part.  
4 Soi Latphrao-wanghin 28,  
Latphrao-Wanghin Road,  
Lat Phrao, Bangkok 10230,  
Thailand

Phone : 02 5388622  
Facimile : 02 9316098  
Email : saplab1990@gmail.com  
<https://www.serotest-thailand.com>

## **International orders**

Sales Department  
Alaska International Importation and Consultation  
P.O. Box 70128  
Fairbanks, AK, 99707  
USA

Phone : +1-424-888-0219  
Email : [info@serotest-thailand.com](mailto:info@serotest-thailand.com)  
<https://www.serotest-thailand.com>



***Ideal Quality Trademark***

# CONTENTS

*Catalogue 2026*

## General Informations

page 2

## Salmonella O Polyvalent Antisera

page 3

## Salmonella O Group Antisera

page 3

## Salmonella O Factor / Vi Antisera

page 4

## Salmonella H Polyvalent Antisera

page 4

## Salmonella H Phase Antisera

page 5

## Salmonella H Factor Antisera

page 5

## Salmonella H R-Phase Antisera

page 5

## Salmonella H for phase inversion Antisera

page 5

## Shigella Antisera

page 6

## Vibrio cholerae Antisera

page 7

## Escherichia coli Antisera

page 7

## Widal and Weil Felix Antigen

page 8

## Positive control for Antigen and New Specific Line Products

page 8

## Microbiological Testing Service Lab

page 9

# ***S&A REAGENTS LAB Ltd., Part.***

## ***Welcome to Quality Serological Diagnostic Reagents***



## ***Beyond Ideal Quality***

### **Productions and Immunizations**

Follow as international standards and guidelines of preparation of antisera.

- Robert Koch Institut, Berlin, Germany.
- Guidelines for the preparation of Salmonella Antisera, WHO Collaborating Center for Reference and Research on Salmonella, Institut Pasteur, France.

### **Since 1989**

S&A Reagents Lab Ltd., Part. had been produced and distributed serological diagnostic reagents.

Under supervised by specialist which had experience more 20 years in this field and trained in Robert Koch Institut, Berlin, Germany and CDC, U.S. Department of Health and Human Service, in specialized field of production and standardization of serological and microbiological reagents.



### **Titre determination**

Salmonella antiserum has been checked for titre value based on 15-20 strains of each group.

### **Control of cross reactions**

Concerning to Salmonella O antisera : The antiserum has been tested against a panel of more than 120 *Salmonella* strains representing all the O groups, O group A until O : 67, varied 4-5 strains for control of each group. By the same way, H antisera have been tested against a panel of more than 90 *Salmonella* strains representing all of H antigens, since H:a, H:b, H:c, ..... , H:z, H:z<sub>6</sub>, H:z<sub>10</sub>, H:z<sub>4</sub> complex, ..... , H:1,2, H:1,5, H:1,6, H:1,7, by orderly, varied 4-5 strains for control of each H antigen.

If any cross reactions occurred in any antiserum, every non-specific agglutinins have been removed by absorption.



### **Ideal quality**

S&A products quality occurred since first step of production line. Laboratory animals have been monitored for free of communicable animal diseases. In charge by microbiologist under supervised by veterinarian.

### **Participating in proficiency tests**

S&A Reagents Lab participate in international proficiency test program, WHO EQAS Program.



***Ideal Quality Trademark***

Antisera are a comprehensive range of high quality bacterial agglutinating antisera for confirmation of bacterial identity. Each antiserum is available in simple to use drop-per bottles, 2 ml per vial, producing clear, easy to read agglutination.

Extensive polyvalent and monovalent antisera available from stock, including.

- *Salmonella*
- *Shigella*
- *Escherichia coli*
- *Vibrio cholerae*

### Salmonella O Polyvalent Antisera

Cat.No.	Product description	Groups or Factors present
AS 002	Salmonella O Polyvalent A-S	Group : A, B, C,.....,O:39(Q),O:40(R),O:41(S)
AS 003	Salmonella O Polyvalent A-I	Group : A, B, C, D, E, F, G, H, I
AS 004	Salmonella OMA	Group : A, B, D, E, O:21(L)
AS 005	Salmonella OMB	Group : C, F, G, H
AS 006	Salmonella OMC	Group : I, 17, 18, 28, 30, 35, 38
AS 007	Salmonella OMD	Group : 39, 40, 41, 42, 43, 44, 45
AS 008	Salmonella OME	Group : 47, 48, 50, 51, 52, 53, 61
AS 009	Salmonella OMF	Group : 54, 55, 56, 57, 58, 59
AS 010	Salmonella OMG	Group : 60, 62, 63, 65, 66, 67



### Salmonella O Group Antisera

Cat.No.	Product description	Factors present
AS 021	Salmonella O Group A	O : 1, 2, 12
AS 022	Salmonella O Group B	O : 4, 5, 27
AS 023	Salmonella O Group C	O : 6, 7, 8, 14, 20
AS 024	Salmonella O Group D	O : 9, 46
AS 025	Salmonella O Group E	O : 3, 10, 15, 19, 34
AS 026	Salmonella O Group F	O : 11
AS 027	Salmonella O Group G	O : 13, 22, 23
AS 028	Salmonella O Group H	O : 6, 14, 24
AS 029	Salmonella O Group I	O : 16
AS 030	Salmonella O Group O : 17 (J)	O : 17
AS 031	Salmonella O Group O : 18 (K)	O : 18
AS 032	Salmonella O Group O : 21 (L)	O : 21
AS 033	Salmonella O Group O : 28 (M)	O : 28
AS 034	Salmonella O Group O : 30 (N)	O : 30
AS 035	Salmonella O Group O : 35 (O)	O : 35
AS 036	Salmonella O Group O : 38 (P)	O : 38
AS 037	Salmonella O Group O : 39 (Q)	O : 39
AS 038	Salmonella O Group O : 40 (R)	O : 40
AS 039	Salmonella O Group O : 41 (S)	O : 41
AS 040	Salmonella O Group O : 42 (T)	O : 42
AS 041	Salmonella O Group O : 43 (U)	O : 43
AS 042	Salmonella O Group O : 44 (V)	O : 44
AS 043	Salmonella O Group O : 45 (W)	O : 45
AS 044	Salmonella O Group O : 47 (X)	O : 47
AS 045	Salmonella O Group O : 48 (Y)	O : 48
AS 046	Salmonella O Group O : 50 (Z)	O : 50
AS 047	Salmonella O Group 51	
AS 048	Salmonella O Group 52	
AS 049	Salmonella O Group 53	
AS 051	Salmonella O Group 55	
AS 052	Salmonella O Group 56	
AS 053	Salmonella O Group 57	
AS 054	Salmonella O Group 58	
AS 055	Salmonella O Group 59	
AS 056	Salmonella O Group 60	
AS 057	Salmonella O Group 61	
AS 058	Salmonella O Group 62	
AS 059	Salmonella O Group 63	
AS 060	Salmonella O Group 65	
AS 061	Salmonella O Group 66	
AS 062	Salmonella O Group 67	

*Beyond  
Ideal  
Quality*



All diagnostic antisera and antigens are filled in a clean room.



*Ideal Quality Trademark*

## Salmonella O Factor Antisera

Cat.No.	Product description
AS 081	Salmonella O : 1
AS 082	Salmonella O : 2
AS 083	Salmonella O : 4
AS 084	Salmonella O : 5
AS 085	Salmonella O : 6 <sub>1</sub>
AS 086	Salmonella O : 6 <sub>2</sub>
AS 087	Salmonella O : 7 (C <sub>1</sub> )
AS 088	Salmonella O : 8 (C <sub>2</sub> )
AS 089	Salmonella O : 9 (D <sub>1</sub> )
AS 090	Salmonella O : 10 E <sub>1</sub>
AS 091	Salmonella O : 12
AS 092	Salmonella O : 14 C <sub>4</sub>
AS 093	Salmonella O : 15 (E <sub>2</sub> )
AS 094	Salmonella O : 19 (E <sub>4</sub> )
AS 095	Salmonella O : 20 (C <sub>3</sub> )
AS 096	Salmonella O : 22 (G <sub>1</sub> )
AS 097	Salmonella O : 23 (G <sub>2</sub> )
AS 099	Salmonella O : 25
AS 100	Salmonella O : 27
AS 101	Salmonella O : 34 (E <sub>3</sub> )
AS 102	Salmonella O : 46 (D <sub>2</sub> )



*Beyond  
Ideal  
Quality*

## Salmonella Vi Antisera

Cat.No.	Product description
AS 111	Salmonella Vi



## Salmonella H Polyvalent Antisera



Cat.No.	Product description	Factors present
AS 121	Salmonella Polyvalent H (phase 1 & 2)	a b c d i e, h e, n, x e, n, z <sub>15</sub> f, g g, m g, p g, q g, s, t g, z <sub>51</sub> m, t k l, v l, w l, z <sub>13</sub> l, z <sub>40</sub> r y z z <sub>6</sub> z <sub>10</sub> z <sub>29</sub> z <sub>35</sub> z <sub>36</sub> z <sub>38</sub> z <sub>39</sub> z <sub>41</sub> z <sub>42</sub> z <sub>44</sub> z <sub>60</sub> z <sub>4</sub> z <sub>23</sub> z <sub>4</sub> z <sub>24</sub> z <sub>4</sub> z <sub>32</sub> 1,2 1,5 1,6 1,7
AS 122	Salmonella HMA	a b c d i z <sub>10</sub> z <sub>29</sub>
AS 123	Salmonella HMB	E complex G complex
AS 124	Salmonella HMC	k r y z L complex Z <sub>4</sub> complex
AS 125	Salmonella HMD	z <sub>35</sub> z <sub>36</sub> z <sub>38</sub> z <sub>39</sub> z <sub>41</sub> z <sub>42</sub> z <sub>44</sub> z <sub>60</sub>
AS 126	Salmonella HME	z <sub>52</sub> z <sub>53</sub> z <sub>54</sub> z <sub>55</sub> z <sub>57</sub> z <sub>61</sub>
AS 127	Salmonella HMF	1 complex + z <sub>6</sub>
AS 128	Salmonella H:1 complex	1,2 1,5 1,6 1,7
AS 129	Salmonella H:E complex	e, h e, n, x e, n, z <sub>15</sub>
AS 130	Salmonella H:G complex	f, g f, g, s f, g, t g, m g, m, s g, m, s, t g, m, t g, p g, p, s g, p, u g, q g, s, t g, z <sub>51</sub>
AS 131	Salmonella H:L complex	l, v l, w l, z <sub>13</sub> l, z <sub>28</sub> l, z <sub>40</sub>
AS 132	Salmonella H:Z <sub>4</sub> complex	z <sub>4</sub> z <sub>23</sub> z <sub>4</sub> z <sub>24</sub> z <sub>4</sub> z <sub>32</sub>

### Remark

AS 126 former name : Salmonella HMIII

AS 127 former name : Salmonella H : non-specific phase



Serotest



*Ideal Quality Trademark*



## Salmonella H Phase Antisera

Cat.No.	Product description
AS 141	Salmonella H : a
AS 142	Salmonella H : b
AS 143	Salmonella H : c
AS 144	Salmonella H : d
AS 145	Salmonella H : i
AS 146	Salmonella H : k
AS 147	Salmonella H : r
AS 148	Salmonella H : y
AS 149	Salmonella H : z
AS 150	Salmonella H : z <sub>6</sub>
AS 151	Salmonella H : z <sub>10</sub>
AS 153	Salmonella H : z <sub>29</sub>
AS 154	Salmonella H : z <sub>35</sub>
AS 155	Salmonella H : z <sub>36</sub>
AS 156	Salmonella H : z <sub>38</sub>
AS 157	Salmonella H : z <sub>39</sub>
AS 158	Salmonella H : z <sub>41</sub>
AS 159	Salmonella H : z <sub>42</sub>
AS 160	Salmonella H : z <sub>44</sub>
AS 161	Salmonella H : z <sub>52</sub>
AS 162	Salmonella H : z <sub>53</sub>
AS 163	Salmonella H : z <sub>54</sub>
AS 164	Salmonella H : z <sub>55</sub>
AS 165	Salmonella H : z <sub>57</sub>
AS 167	Salmonella H : z <sub>60</sub>
AS 168	Salmonella H : z <sub>61</sub>

## Salmonella H Factor Antisera

Cat.No.	Product description
AS 191	Salmonella H : f
AS 192	Salmonella H : g
AS 193	Salmonella H : h
AS 194	Salmonella H : m
AS 195	Salmonella H : n,x
AS 196	Salmonella H : p
AS 197	Salmonella H : q
AS 198	Salmonella H : s
AS 199	Salmonella H : t
AS 200	Salmonella H : u
AS 201	Salmonella H : v
AS 202	Salmonella H : w
AS 203	Salmonella H : x
AS 204	Salmonella H : 2
AS 205	Salmonella H : 5
AS 206	Salmonella H : 6
AS 207	Salmonella H : 7
AS 208	Salmonella H : z <sub>13</sub>
AS 209	Salmonella H : z <sub>15</sub>
AS 210	Salmonella H : z <sub>23</sub>
AS 211	Salmonella H : z <sub>24</sub>
AS 212	Salmonella H : z <sub>28</sub>
AS 213	Salmonella H : z <sub>32</sub>
AS 214	Salmonella H : z <sub>51</sub>

## Salmonella H R Phase Antisera

Cat.No.	Product description
AS 152	Salmonella H : Rz <sub>27</sub>
AS 221	Salmonella H : Rz <sub>40</sub>
AS 222	Salmonella H : Rz <sub>45</sub>
AS 166	Salmonella H : Rz <sub>59</sub>
AS 169	Salmonella H : Rz <sub>66</sub>

## Salmonella H for phase inversion Antisera

Cat.No.	Product description
AS 231	Salmonella H : a
AS 232	Salmonella H : b
AS 233	Salmonella H : c
AS 234	Salmonella H : d
AS 235	Salmonella H : e,h
AS 236	Salmonella H : e,n,x
AS 237	Salmonella H : e,n,z <sub>15</sub>
AS 238	Salmonella H : f,g
AS 239	Salmonella H : g,m
AS 240	Salmonella H : g,m,s
AS 241	Salmonella H : g,p
AS 242	Salmonella H : g,p,u
AS 243	Salmonella H : g,q
AS 244	Salmonella H : g,s,t
AS 245	Salmonella H : g,z <sub>51</sub>
AS 246	Salmonella H : i
AS 247	Salmonella H : k
AS 248	Salmonella H : l,v
AS 249	Salmonella H : l,w
AS 250	Salmonella H : l,z <sub>13</sub>
AS 251	Salmonella H : l,z <sub>28</sub>
AS 252	Salmonella H : m,t
AS 253	Salmonella H : r
AS 254	Salmonella H : y
AS 255	Salmonella H : z
AS 256	Salmonella H : z <sub>41</sub> z <sub>23</sub>
AS 257	Salmonella H : z <sub>41</sub> z <sub>24</sub>
AS 258	Salmonella H : z <sub>41</sub> z <sub>32</sub>
AS 259	Salmonella H : z <sub>6</sub>
AS 260	Salmonella H : z <sub>10</sub>
AS 261	Salmonella H : Rz <sub>27</sub>
AS 262	Salmonella H : z <sub>29</sub>
AS 263	Salmonella H : z <sub>35</sub>
AS 264	Salmonella H : z <sub>36</sub>
AS 265	Salmonella H : z <sub>38</sub>
AS 266	Salmonella H : z <sub>39</sub>
AS 267	Salmonella H : z <sub>41</sub>
AS 268	Salmonella H : z <sub>42</sub>
AS 269	Salmonella H : z <sub>44</sub>
AS 270	Salmonella H : z <sub>52</sub>
AS 271	Salmonella H : z <sub>53</sub>
AS 272	Salmonella H : z <sub>54</sub>
AS 273	Salmonella H : z <sub>55</sub>
AS 274	Salmonella H : z <sub>57</sub>
AS 275	Salmonella H : Rz <sub>59</sub>
AS 276	Salmonella H : z <sub>60</sub>
AS 277	Salmonella H : z <sub>61</sub>
AS 278	Salmonella H : Rz <sub>66</sub>
AS 279	Salmonella H : 1,2
AS 280	Salmonella H : 1,5
AS 281	Salmonella H : 1,6
AS 282	Salmonella H : 1,7
AS 283	Salmonella H : Rz <sub>40</sub>
AS 284	Salmonella H : Rz <sub>45</sub>



*Beyond  
Ideal  
Quality*



## Shigella Polyvalent Antisera



Cat.No.	Product description
AS 338	Shigella Poly.A ( <i>S. dysenteriae</i> 1-7)
AS 339	Shigella Poly.A-1 ( <i>S. dysenteriae</i> 8-12)
AS 334	Shigella Poly.B ( <i>S. flexneri</i> 1-6 and group(3),4 & 6 & (7),8)
AS 340	Shigella Poly.C ( <i>S. boydii</i> 1-7)
AS 341	Shigella Poly.C-1 ( <i>S. boydii</i> 8-11)
AS 342	Shigella Poly.C-2 ( <i>S. boydii</i> 12-15)
AS 336	Shigella Poly.C-3 ( <i>S. boydii</i> 16-18)
AS 337	Shigella Poly.D ( <i>S. sonnei</i> phase I&II)

*Beyond  
Ideal  
Quality*



## Shigella Type Antisera

Cat.No.	Product description
AS 361	Shigella dysenteriae type 1
AS 362	Shigella dysenteriae type 2
AS 363	Shigella dysenteriae type 3
AS 364	Shigella dysenteriae type 4
AS 365	Shigella dysenteriae type 5
AS 366	Shigella dysenteriae type 6
AS 367	Shigella dysenteriae type 7
AS 368	Shigella dysenteriae type 8
AS 369	Shigella dysenteriae type 9
AS 370	Shigella dysenteriae type 10
AS 371	Shigella dysenteriae type 11
AS 372	Shigella dysenteriae type 12
AS 391	Shigella flexneri type I
AS 392	Shigella flexneri type II
AS 393	Shigella flexneri type III
AS 394	Shigella flexneri type IV
AS 395	Shigella flexneri type V
AS 396	Shigella flexneri type VI
AS 397	Shigella flexneri Var. X
AS 398	Shigella flexneri Var. Y
AS 399	Shigella flexneri Var. Z
AS 411	Shigella boydii type 1
AS 412	Shigella boydii type 2
AS 413	Shigella boydii type 3
AS 414	Shigella boydii type 4
AS 415	Shigella boydii type 5
AS 416	Shigella boydii type 6
AS 417	Shigella boydii type 7
AS 418	Shigella boydii type 8
AS 419	Shigella boydii type 9
AS 420	Shigella boydii type 10
AS 421	Shigella boydii type 11
AS 422	Shigella boydii type 12
AS 423	Shigella boydii type 13
AS 424	Shigella boydii type 14
AS 425	Shigella boydii type 15
AS 426	Shigella boydii type 16
AS 427	Shigella boydii type 17
AS 428	Shigella boydii type 18
AS 441	Shigella sonnei Phase I
AS 442	Shigella sonnei Phase II



*Ideal Quality Trademark*



## Vibrio cholerae Antisera



Cat.No.	Product description
AS 491	Vibrio cholerae O1 Polyvale
AS 492	Vibrio cholerae Inaba
AS 493	Vibrio cholerae Ogawa
AS 494	Vibrio cholerae O139
AS 495	Vibrio cholerae O141

## Escherichia coli Antisera

Cat.No.	Product description
AS 521	E. coli (O&K) Polyvalent I
AS 522	E. coli O 25 : K 11
AS 523	E. coli O 26 : K 60
AS 524	E. coli O 44 : K 74
AS 525	E. coli O 55 : K 59
AS 526	E. coli O 78 : K 80
AS 527	E. coli O 111 : K 58
AS 528	E. coli O 114 : K -
AS 529	E. coli O 119 : K 69
AS 530	E. coli (O&K) Polyvalent II
AS 531	E. coli O 86 : K 61
AS 532	E. coli O 124 : K 72
AS 533	E. coli O 125 : K 70
AS 534	E. coli O 126 : K 71
AS 535	E. coli O 127 : K 63
AS 536	E. coli O 128 : K 67
AS 537	E. coli (O&K) Polyvalent III
AS 538	E. coli O 18a O 18c : K 77
AS 539	E. coli O 20a O 20b : K 84
AS 540	E. coli O 28 : K 73
AS 541	E. coli O 112a O 112c : K 66
AS 545	E. coli O157
AS 546	E. coli H7
AS 547	E. coli O1 : K1
AS 548	E. coli O2



AS 521 E. coli (O&K) Polyvalent I : composed of O25 : K11 , O26 : K60 , O44 : K74 , O55 : K59 , O78 : K80 , O111 : K58 , O114 : K- , O119 : K69

AS 530 E. coli (O&K) Polyvalent II : composed of O86 : K61 , O124 : K72 , O125 : K70 , O126 : K71 , O127 : K63 , O128 : K67

AS 537 E. coli (O&K) Polyvalent III : composed of O18a O18c : K77 , O20a O20b : K84 , O28 : K73 , O112a O112c : K66

*Beyond  
Ideal  
Quality*



Serotest



*Ideal Quality Trademark*

Febrile Antigens are bacterial suspensions for use as an aid in the diagnosis of certain febrile diseases such as brucellosis, rickettsial and salmonellosis diseases. These bacterial suspensions may be used in either slide (qualitative) or tube (semi-quantitative) agglutination tests to detect for the presence of bacterial agglutinins associated with bacterial infections.

Each antigen is available in simple to use dropper bottles, 5 ml per vial, producing easy to read agglutination.

*Beyond  
Ideal  
Quality*

#### Salmonella Antigen for Widal test

Cat.No.	Product description
AG 201	Salmonella Paratyphi A-O
AG 202	Salmonella Paratyphi B-O
AG 203	Salmonella Paratyphi C-O
AG 204	Salmonella Typhi O
AG 208	Salmonella Typhi H



#### Proteus Antigen for Weil Felix test

Cat.No.	Product description
AG 231	Proteus OX2
AG 232	Proteus OX19
AG 233	Proteus OXK

Positive control for Febrile Antigen is available in simple to use dropper bottles, 2 ml per vial, producing easy to read agglutination.

#### Positive Control Antisera for Widal Antigen



Cat.No.	Product description
AS 581	Positive control Salmonella Paratyphi A-O
AS 583	Positive control Salmonella Paratyphi B-O
AS 585	Positive control Salmonella Paratyphi C-O
AS 587	Positive control Salmonella Typhi O
AS 588	Positive control Salmonella Typhi H

#### Positive Control Antisera for Weil Felix Antigen

Cat.No.	Product description
AS 611	Positive control Proteus OX2
AS 612	Positive control Proteus OX19
AS 613	Positive control Proteus OXK



#### New Specific Line Products



Cat.No.	Product description
AG 402	Salmonella O Group D Antigen for S. Pullorum Pack size 25 ml./vial



**Serotest**  
*Ideal Quality Trademark*



# *S&A REAGENTS LAB Ltd., Part.*

## **Microbiological Testing Service Laboratory**

S&A Reagents Lab Ltd., Part. have a service department for testing customers samples by microbiological isolation for the identification for the enteropathogenic bacteria.

We are the first and only private laboratory, Since 1989, in Thailand which is capable of identifying *Salmonella* serovars. Our testing is supervised by Prof. Suwat Bangtrakulnonth a specialist with more than 50 years of experience in this field who trained at Robert Koch Institut, Berlin, Germany and the Center for Disease Control as part of the U.S. Department of Health and Human Services and Prof. Dr. Aroon Bangtrakulnonth a specialist with more than 50 years of experience in microbiological field who worked in Department of Medical Science , Ministry of Public Health , Thailand .

We serve by neutrality, no conflicts of interest. We provide you fast and accurate results.

Samples of specimen which we diagnose :

- Food sample
- Animal Feed
- Dog chew products
- Pure culture
- Rectal swab
- Others



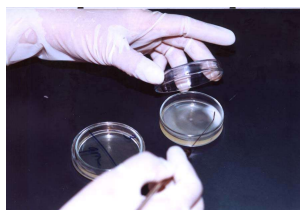
Microbiological type which can diagnosis :

- Total Bacterial Count
- *Escherichia coli* / Coliform
- *Escherichia coli* O157 : H7
- Enterobacteriaceae
- *Salmonella* spp.
- *Shigella* spp.
- *Vibrio cholerae* O1/O139/O141
- *Vibrio parahaemolyticus*
- *Vibrio vulnificus*
- Other Enteropathogenic Bacteria



Identification of Serotype & Serovars :

- *Salmonella* spp.
- *Shigella* spp.
- *Vibrio cholerae* O1/O139/O141
- *Escherichia coli* O157 : H7



Serotest

*Ideal Quality Trademark*